



508 Creske Avenue  
Rothschild, WI 54474  
P: 715-355-0712  
F: 715-355-0775  
www.millspecmachine.com

## LÖWER – DiscMaster 2D2D

The LÖWER DiscMaster is the latest Löwer innovation in the field of sanding. The DiscMaster 2D2D features a unique array of excentric sanding discs (patent pending). This unique system leads to greater results in finish and intermediate sanding.

The excentric rotating discs orbital movement (patent pending) applies a complete sanding action to the entire work piece. Every point of the work piece is sanded from all angles and all directions. All four edges of the work piece are sanded equally and consistently. The rotating discs sand across the grain as well as with the grain. This kind of cross-sanding provides an exceptional finish on profiled and flat surfaces.

### Two Disc-Stations each with:

- 11 sanding discs 250mm (10") diameter, each with 24 keyways 75mm (3") long
- Gear motor 2.2 kW (3HP)
- Variable disc speed 50-300 rpm by frequency converter
- Excentric orbital disc movement (patent pending)
- Separate height adjustment of each disc-station
- Electronic digital display to show height of disc-station
- Selection switch for direction of discs, clockwise/counterclockwise
- Increased gap between rows of discs to allow additional hold down rollers between discs



### Basic Machine:

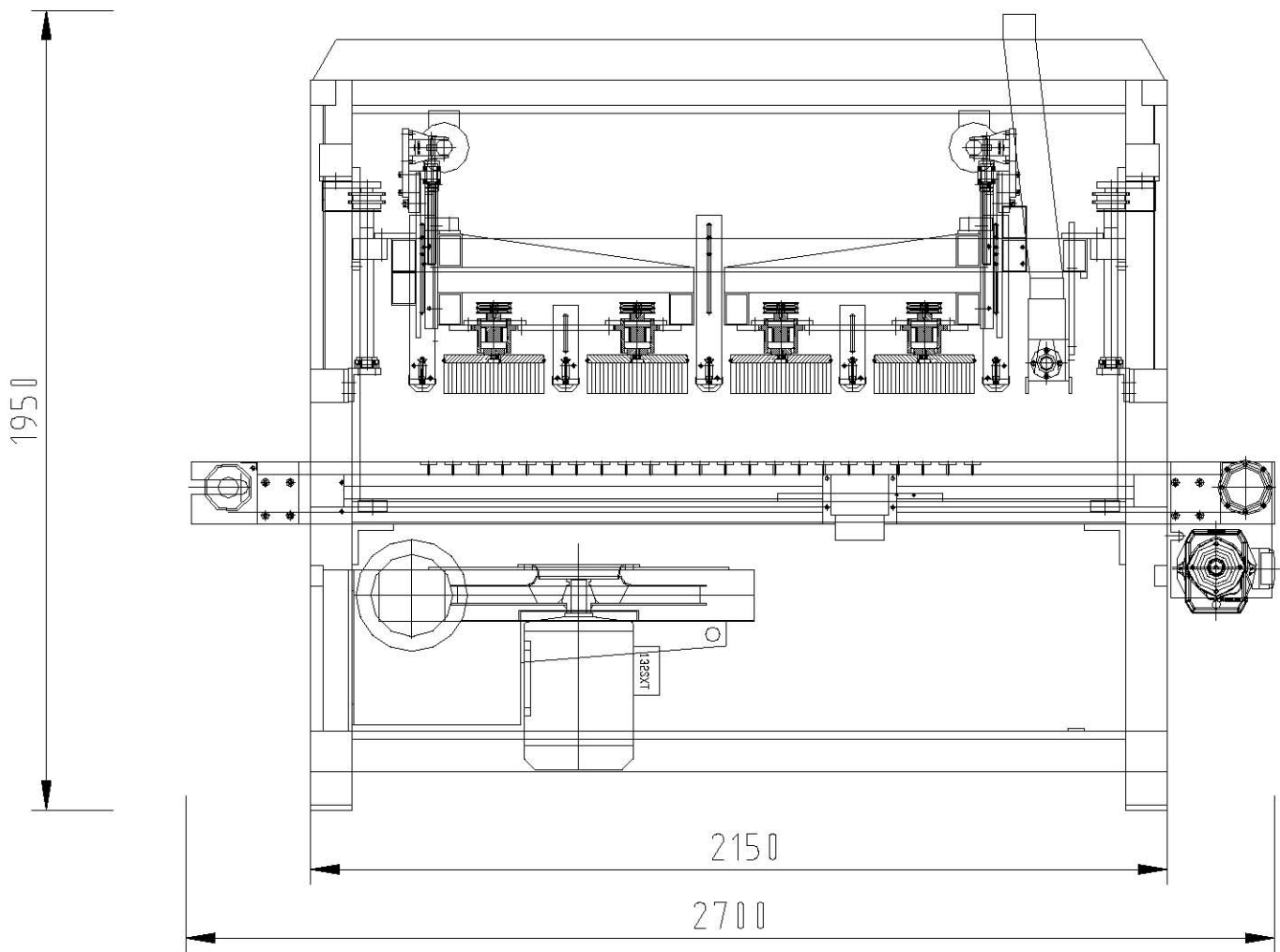
- Spring loaded hold down rollers for holding down narrow work pieces, pre-adjustable in height, linked to height adjustment of spindles or disc station
- Through feed by feed belt with variable speed 3-15m/min (8-50 ft/min) by gearmotor 1.5 kW (2HP)
- Automatic centering of feed belt, pneumatically controlled
- A vacuum bed with vacuum feed belt to hold down small work pieces with a strong 7.5kW (10HP) vacuum motor.
- Constant height of through feed, possible to put machine in finishing line

- Maximum height of work piece 120mm (4.8")
- Motorized height adjustment of sanding units by gearmotor 0.37 kW (0.5HP)
- Electronic digital display for showing height of work piece
- Sensor activated pneumatic oscillating blowing device for cleaning the work piece at the end of the machine
- Antistatic brush strip device
- Control panel at left side
- Emergency off pull line at infeed and outfeed
- Infeed control with emergency stop if work piece is too thick
- Emergency off by opening doors
- Switch manual/automatic (start machine from control panel or from finishing line)
- 480V, 60Hz, 3PH, air connection 6-8 bar
- Dust extraction outlets 3 x dia. 80mm (3.2") (blowing device), 2 x dia. 140mm (5.6") (rollers) and 1 x dia. 200mm (8") (vacuum)
- Plexiglas windows both sides
- Connection for compressed air supply 1 bar for cooling electric cabinet box, with water and oil separator

**Technical Data:**

Max. working width	1350mm (53")
Max. thickness of work piece	120mm (4.8")
Motor disc stations	2.2kW, 50-300rpm
Speed of feed belt	3-15m/min (8-50 ft/min)
Length/width	2700mm/2100mm (108"/84")

US standards in measurement are an approximation



**Options:**

Power-Panel Control, colored touch panel, strong PLC, menu controlled functions like manual mode – creating a program, storing a program, loading a program, different pin-areas, choice of pin, service-function, connection card for connecting machine to PLC of finishing line

